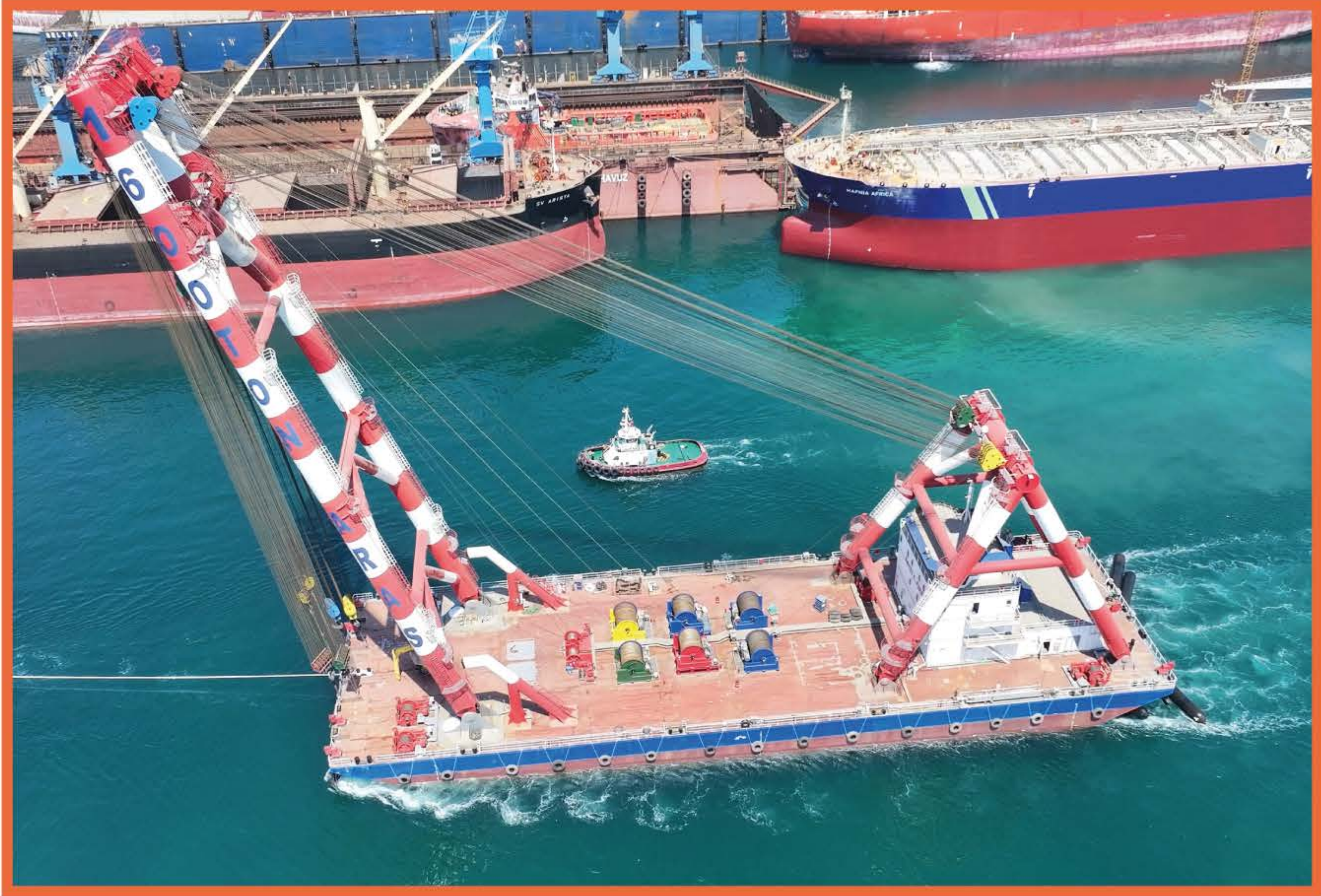


Floating Crane Barge
Lifting Capacity: 400 Tons x 4
Lifting Capacity MAX: 1,600 Tons



FLOATING CRANE BARGE

Floating Crane : 1,600 Tons
 Classification : RINA
 L.O.A. : 91,44
 LBP : 87,78
 Breadth : 27,43
 Depth : 6,10
 Draught (Min) : 1,60
 Draught (Load Max) : 4,875
 Gros Ton : 4,223
 DWT : 8,757

Hull (build of year) : 2007
 Floating Sheerleg (build of year) : 2025

MAIN HOISTING WINCH

Main Hook : 400 ton x 4 set
 Capacity : 38 ton / 25 m/min
 Wire Spec. : Φ 40 / 2 x 2,200m + 2 x 2,445m = Total 9,290m

AUX HOISTING WINCH

Aux Hook : 60 ton x 2 set
 Capacity : 20 ton / 24 m/min
 Wire Spec. : Φ 40 / 2 x 840 = Total 1,680m

LUFFING WINCH

Capacity : 38 ton / 25 m/min
 Wire Spec. : Φ 40 / 2 x 4,300m = Total 8,600m

ANCHOR WINCH

1 set

Chain Spec : 56 mm
 Holding Load : 110 T / 10m/min

MOORING WINCH

6 set

Capacity : 30 ton / 10 m/min
 Wire Spec. : Φ 40 x 750 m

T: +90 216 446 53 09 | F: +90 216 446 13 39

www.aras-marine.com | mail:info@aras-marine.com

Sanayi Mahallesi Teknopark Bulvarı No: 1/10C Pendik / İstanbul / Türkiye

ANADOLU



Floating Crane Barge
Lifting Capacity: 400 Tons x 4
Lifting Capacity MAX: 1,600 Tons

TECHNICAL DATA

Main Generator : 3 sets,
 capacity 520 kw type
 6M33D633E200
 4 cycle,
 1500 rpm.

Harbour Generator : 2 sets
 6M16G250/5 20 kw
 4 cycle 1500 rpm

Ballast Pump : 2 sets
 ECO SNL 150-315
 capacity 250 m3 / 30 kw

Fire Pump : 2 sets
 ECO SNL 65-200
 capacity 50 m3 / 15 kw

NAVIGATIONS

Public Addressor
 Auto Telephone Exchange , 1 set
 Common Battery Telephone, 1 set
 Fire & General Alarm System, 1 set
 Portable Telephone System, 1 set
 CCTV Camera System, 1 set
 Navigation Light, 1 set

PERFORMANCE

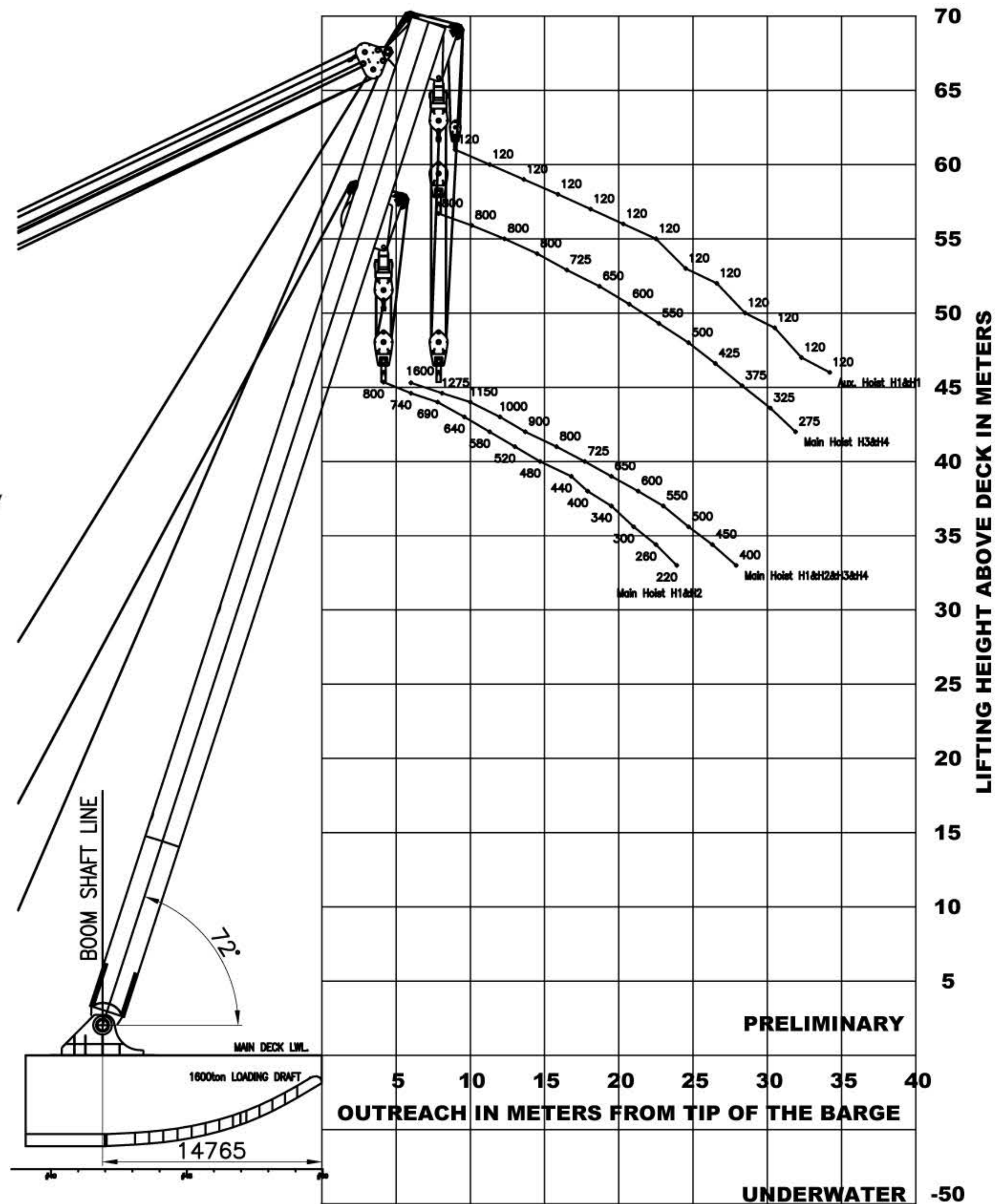
Lifting Capacity : 1,600 tons
 Lifting Speed : 1,4 m/min
 Boom Height : 71,00 m
 Underwater : - 50,00 m

ACCOMMODATION

Total Capacity : 20 Persons

LIFE SAVING & FIRE EXTINGUISHER ENDOWMENT

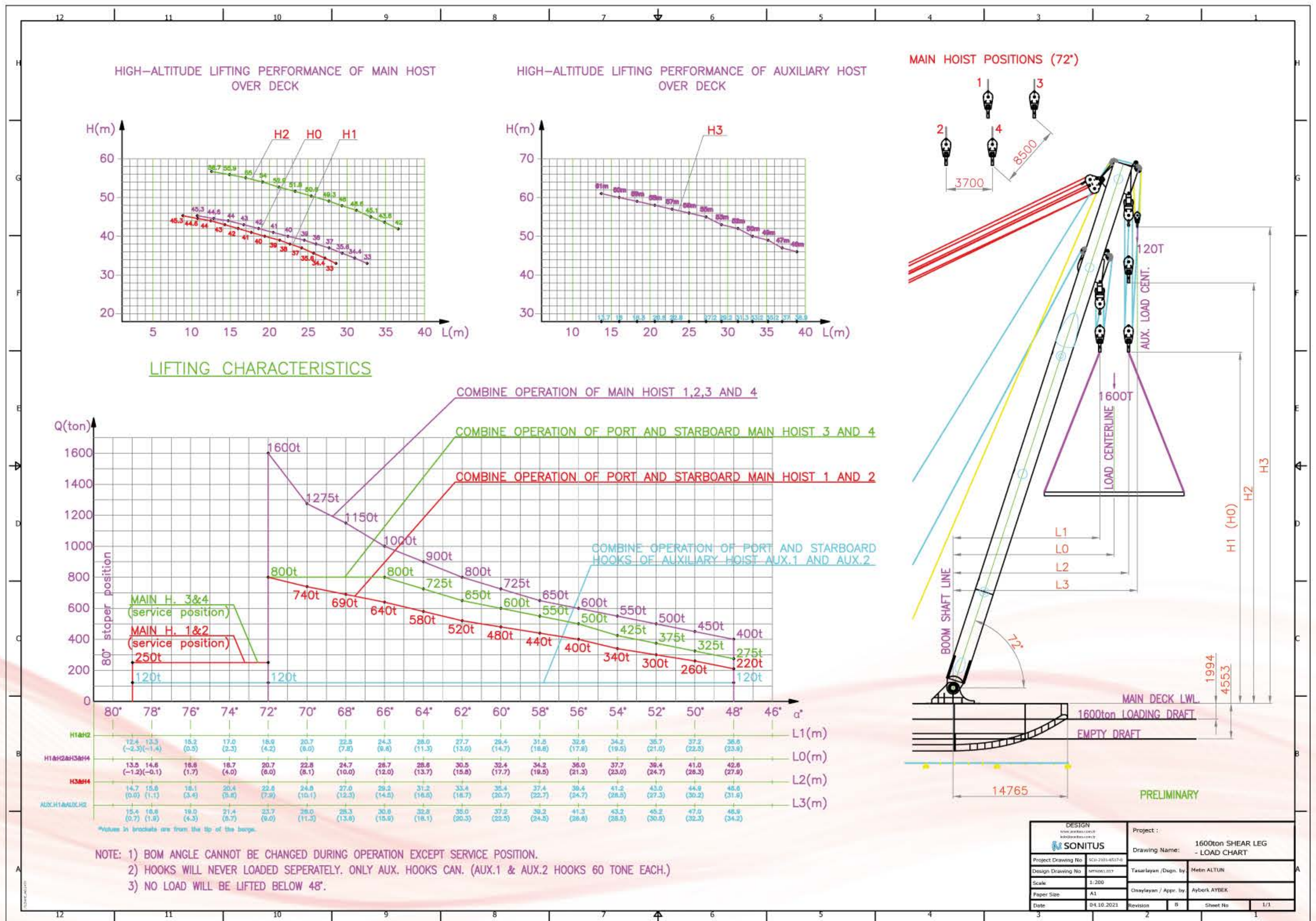
20 Persons



ANADOLU



Floating Crane Barge
Lifting Capacity: 400 Tons x 4
Lifting Capacity MAX: 1,600 Tons



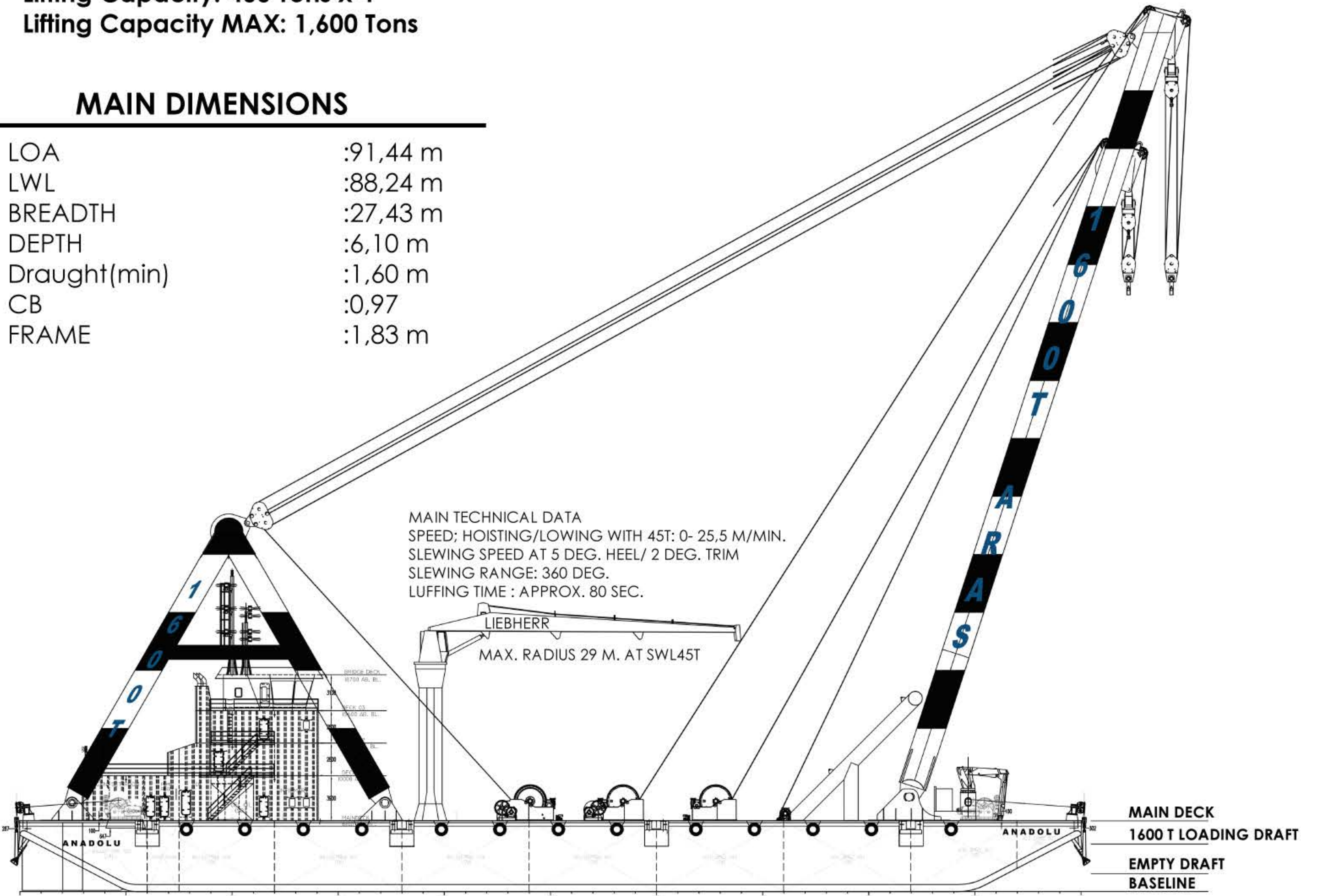
ANADOLU



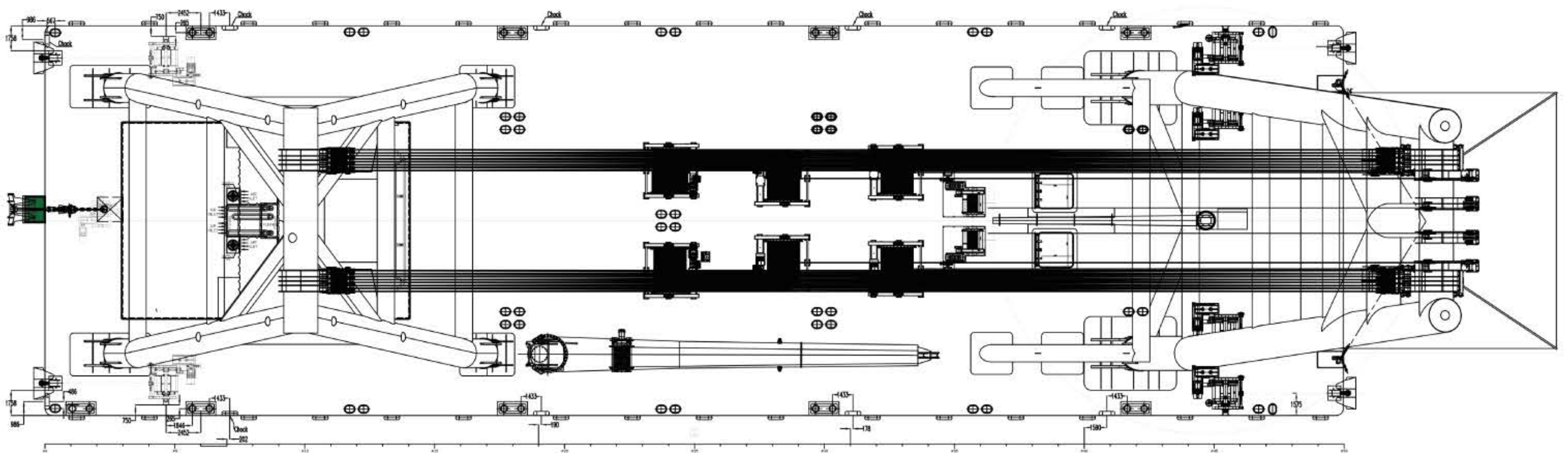
Floating Crane Barge
Lifting Capacity: 400 Tons x 4
Lifting Capacity MAX: 1,600 Tons

MAIN DIMENSIONS

LOA	:91,44 m
LWL	:88,24 m
BREADTH	:27,43 m
DEPTH	:6,10 m
Draught(min)	:1,60 m
CB	:0,97
FRAME	:1,83 m

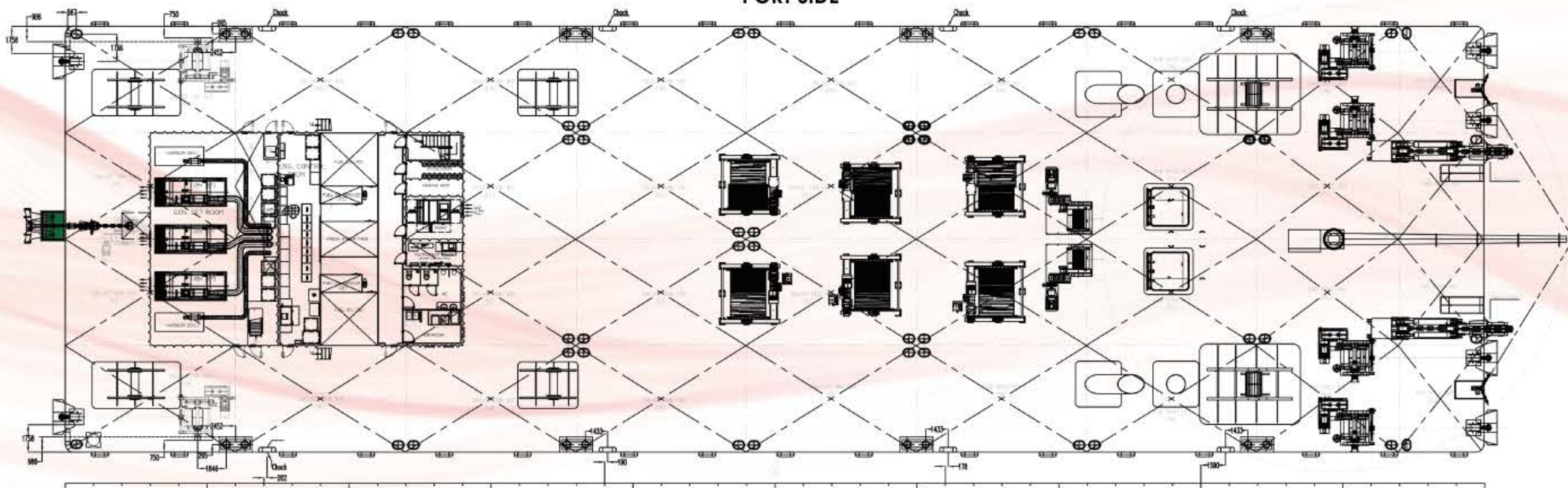


PROFILE VIEW



MAIN DECK

PORT SIDE



MAIN DECK
STARBOARD SIDE