

# ATAMAN

## ANCHOR HANDLING TUG SUPPLY VESSEL



### GENERAL INFORMATION

Name : ATAMAN  
Type : Anchor Handling Tug Supply Vessel  
Flag : Turkish  
Year and Place of Built : 2007 / Malaysia  
Class : ABS  
P&I : Turk P&I  
Length OA : 48,00 m  
Breadth : 13,20 m  
Depth : 5,20 m  
GRT / NRT : 1039 / 311  
Accommodation : 40 personnel  
Designed Draught : 4,20 m  
Builder : Sealink Shipyard, Miri  
Notation : Class 1 + Hull, DP-O

### PERFORMANCES

Maximum Speed : 10 knots  
Service Speed : 8 knots  
Type of Fuel : Diesel Oil  
Range : App. 20.000 miles  
Fuel Consumption : 8 ton/day @ Max. Speed,  
6,5 ton/day @ Service Speed

### DISCHARGE RATES

Fuel Oil : 130m<sup>3</sup>/hr @ 70m head  
Potable Water : 90m<sup>3</sup>/hr @ 75m head  
Drill Water : 75cum/hr @ 50m head  
Fresh Water Maker : Ozmoz 8 tons/day  
Oily Water Separator Sewage : 1xGeorim  
500 lt/hr @ 2kg/cm<sup>3</sup>  
Treat Plant : 1xIl Seung (40 man)

### CARGO CAPACITIES

Dead weight : 680 t  
Deck Cargo : 200 t  
Deck Strength : 7,5 tons/m<sup>2</sup>  
Clear Deck Area : 225 m<sup>2</sup>  
Fuel Oil : 639 m<sup>3</sup>  
Lube Oil : 6,26 m<sup>3</sup>  
Fresh Water : 205 m<sup>3</sup>  
Drill Water/SWB : 90 m<sup>3</sup>  
Foam/Detergent : 19 m<sup>3</sup>

T: +90 216 446 53 09 | F: +90 216 446 13 39

[www.aras-marine.com](http://www.aras-marine.com) | [mail:info@aras-marine.com](mailto:info@aras-marine.com)

Sanayi Mahallesi Teknopark Bulvarı No: 1/10C Pendik / İstanbul / Türkiye



# ATAMAN

## ANCHOR HANDLING TUG SUPPLY VESSEL



### PROPULSION SYSTEM

Main Engines : 3840 kW / 5150 BHP @ 1600 rpm  
Caterpillar  
Gearbox : For CPP Ratio 7.455:1  
Bow Thruster : 5 mt thruster CPP motor driven  
Wheelhouse Control : Fwd&aft control  
Rudder : Independent  
Generator : 3x360 kW@ 1500 rpm  
Emergency Generator : 1x45 kW  
Propellers : CPP 2650mm dia Berg  
Anchors : 2xStockless, 1440 kg ea

### FIRE FIGHTING EQUIPMENT

Fire Pump : 2xseawater @ 1500m<sup>3</sup>/hr @ 14 bar  
Fire Monitor : 2xhandwheels, 1200 m<sup>3</sup>/hr  
Foam Tank : 19,33 m<sup>3</sup>  
Dispersant System : 19,33 m<sup>3</sup>  
Full Flooding : CO2 System Engine Room

### LIFE-SAVING EQUIPMENT

Search Lights : 2x1000w  
Floodlights : 6x500w  
Life rafts : 4x20-men Fujikura  
Lifebuoys : 8xSelf igniting elect lights  
Lifejackets : 46 pcs  
Rescue Boat : 1xVailant c/w 25 BHP Solas  
Approved

### RADIO & NAVIGATION EQUIPMENT

SSB : Furuno – FS 1520  
VHF : Furuno – FM 8 8005  
Radar : 1 x IMO approved (Furuno)  
Echo Sounder : JMC – F 3000 W  
Speed Log : IMO Type -Anthea  
Gyro Compass : 1 x Simrad with Autopilot  
GPS : 2xFuruno  
GMDSS : 1xFuruno  
Magnetic Compass : 1xDaiko Keiki  
Navtex Receiver : 1xHanshin  
SART : 2xACR Parthfinder  
Portable VHF Radio : 1xJMC  
Inmarsat : 1xFuruno c/w SSAS capability  
EPIRB : 1xGME  
AIS : 1xFuruno – FA -150

### FIRE FIGHTING EQUIPMENT

Fire Pump : 2xseawater @ 1500m<sup>3</sup>/hr @ 14 bar  
Fire Monitor : 2xhandwheels, 1200 m<sup>3</sup>/hr  
Foam Tank : 19,33 m<sup>3</sup>  
Dispersant System : 19,33 m<sup>3</sup>  
Full Flooding : CO2 System Engine Room

### TOWING / ANCHOR HANDLING / DECK EQUIPMENT

Bollard Pull : 68 t approx.  
Anchor Handling Winch : 1x Plimsoll waterfall type 150t  
Tow Drum : 1000m x 56mm  
Anchor Handling Drum : Plimsoll Pc-Ahtw Wf 150-D1  
Brake Capacity : 200 t  
Capstan : 2x 5 t x 0.15 m/min Plimsoll  
Tugger Winch : 2x 10 t x 0.15 m/min Plimsoll  
Steam Roller : SWL 150 t 4 m x 1.6 m dia  
Anchor Windlass : 4.9t @ 11m/min Grade,  
2 stud line chain  
Shark Jaw : Hydraulic 300 t, max 114 mm dia  
Deck Crane : SWL 2 ton @ 6 m

T: +90 216 446 53 09 | F: +90 216 446 13 39

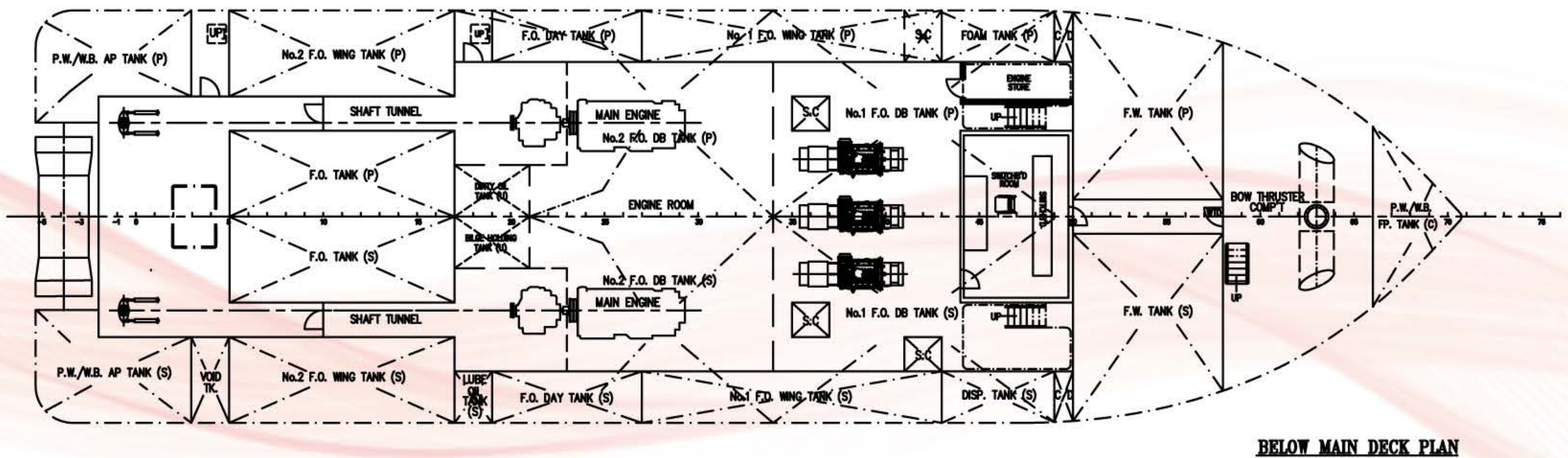
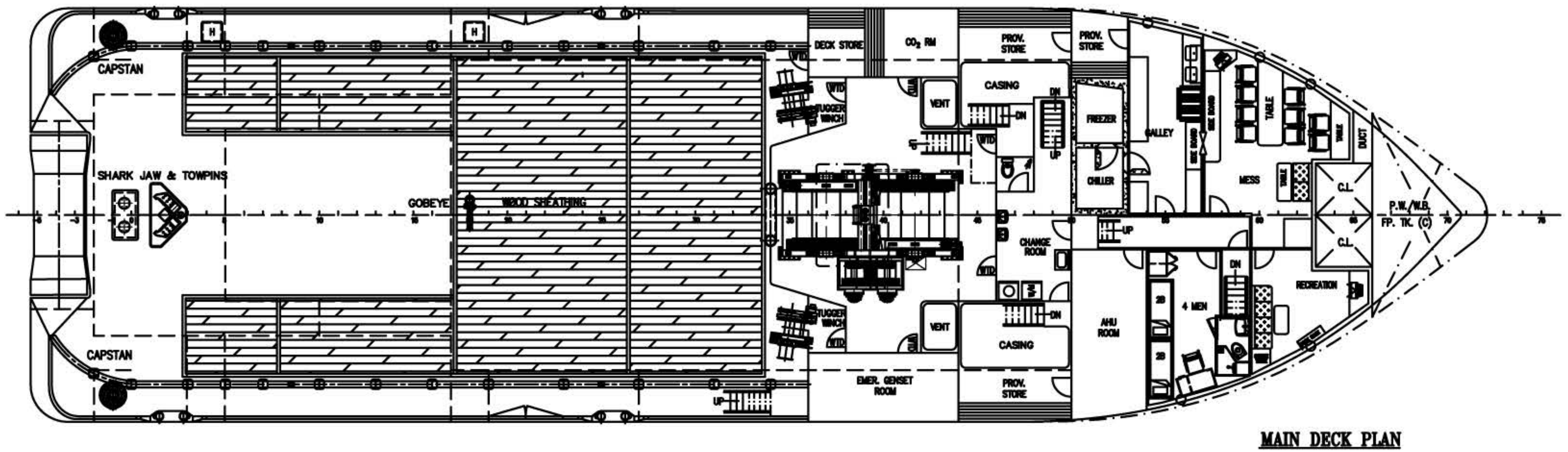
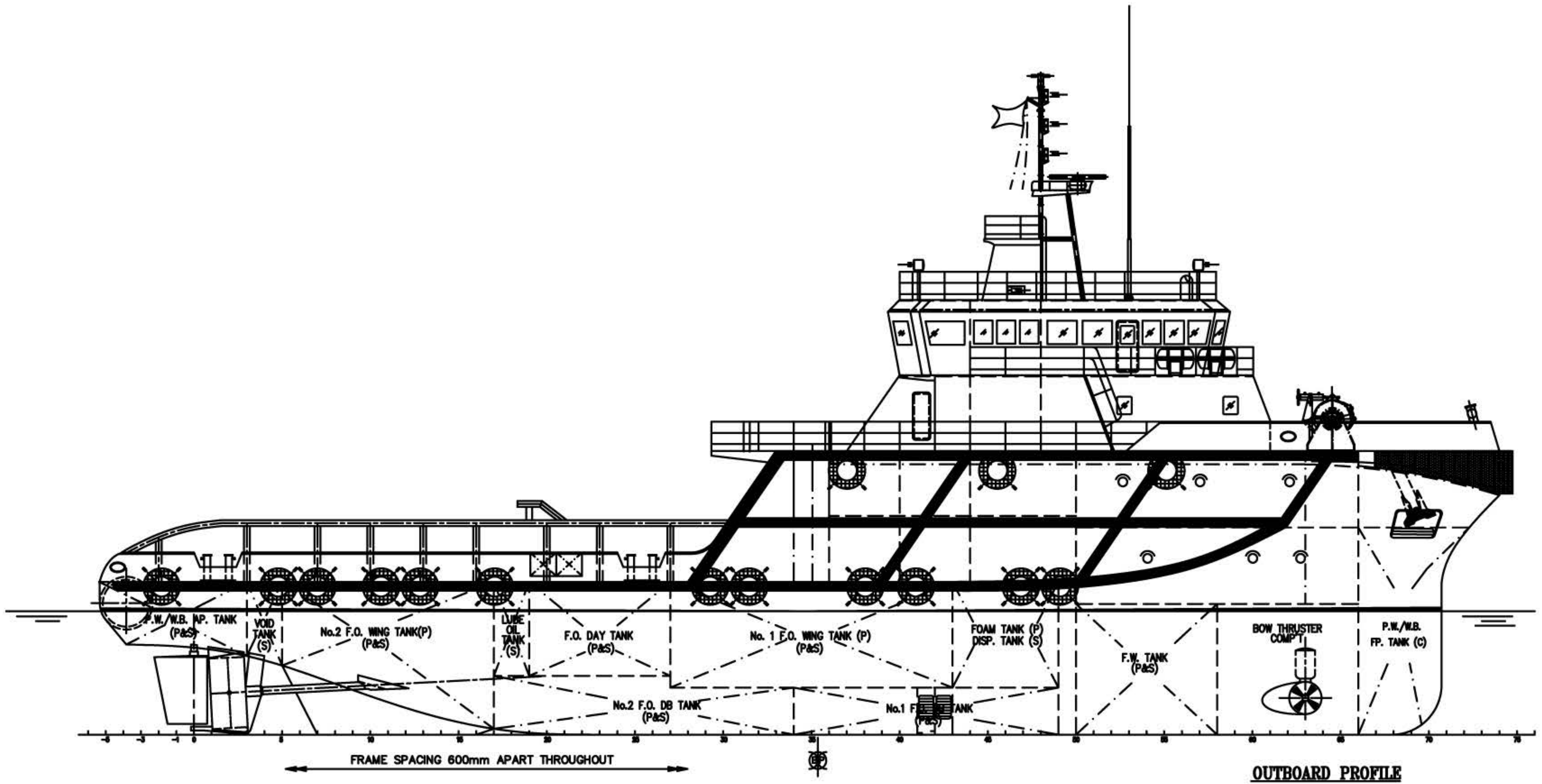
[www.aras-marine.com](http://www.aras-marine.com) | [mail:info@aras-marine.com](mailto:info@aras-marine.com)

Sanayi Mahallesi Teknopark Bulvarı No: 1/10C Pendik / İstanbul / Türkiye



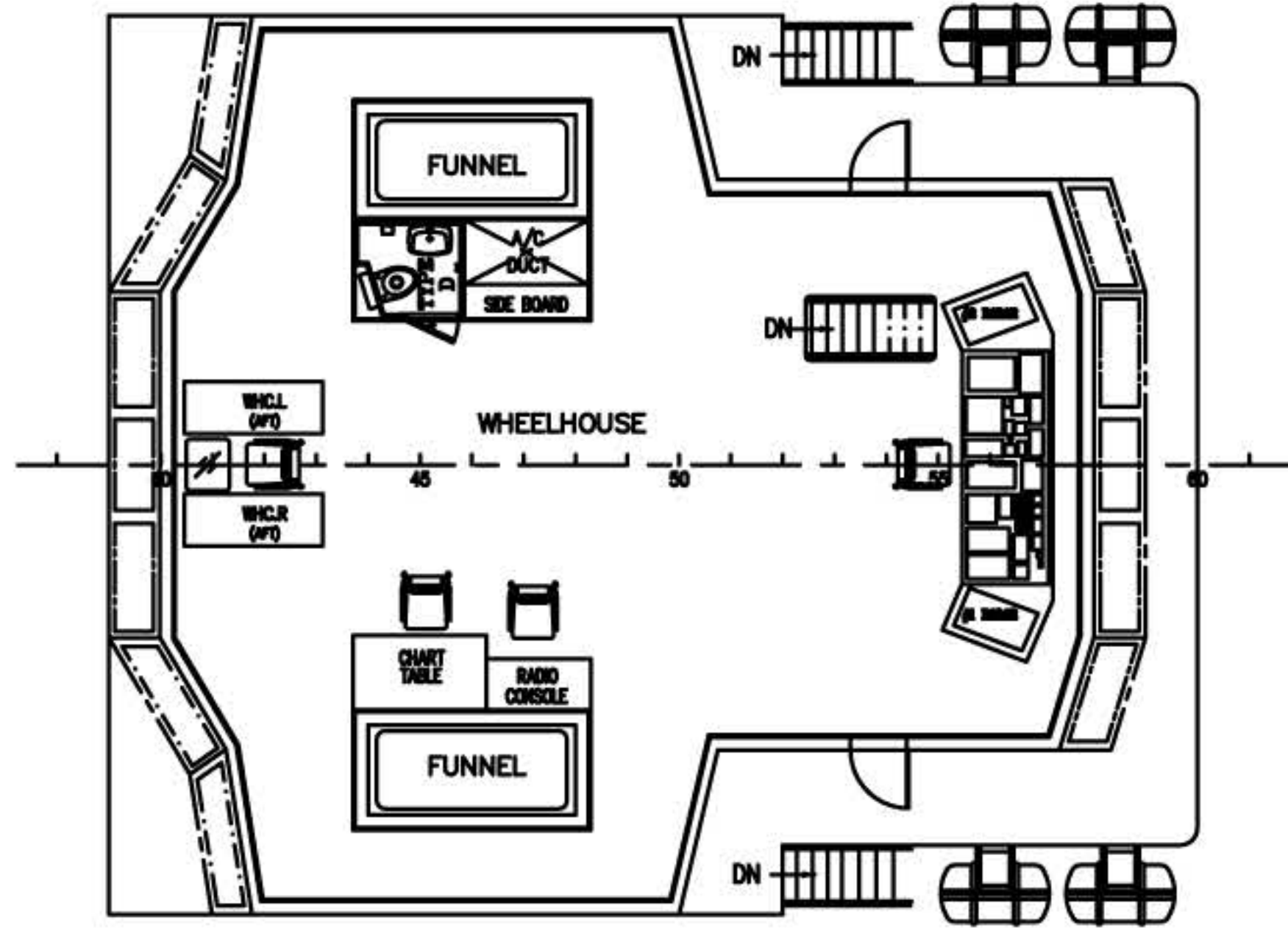
# ATAMAN

## ANCHOR HANDLING TUG SUPPLY VESSEL

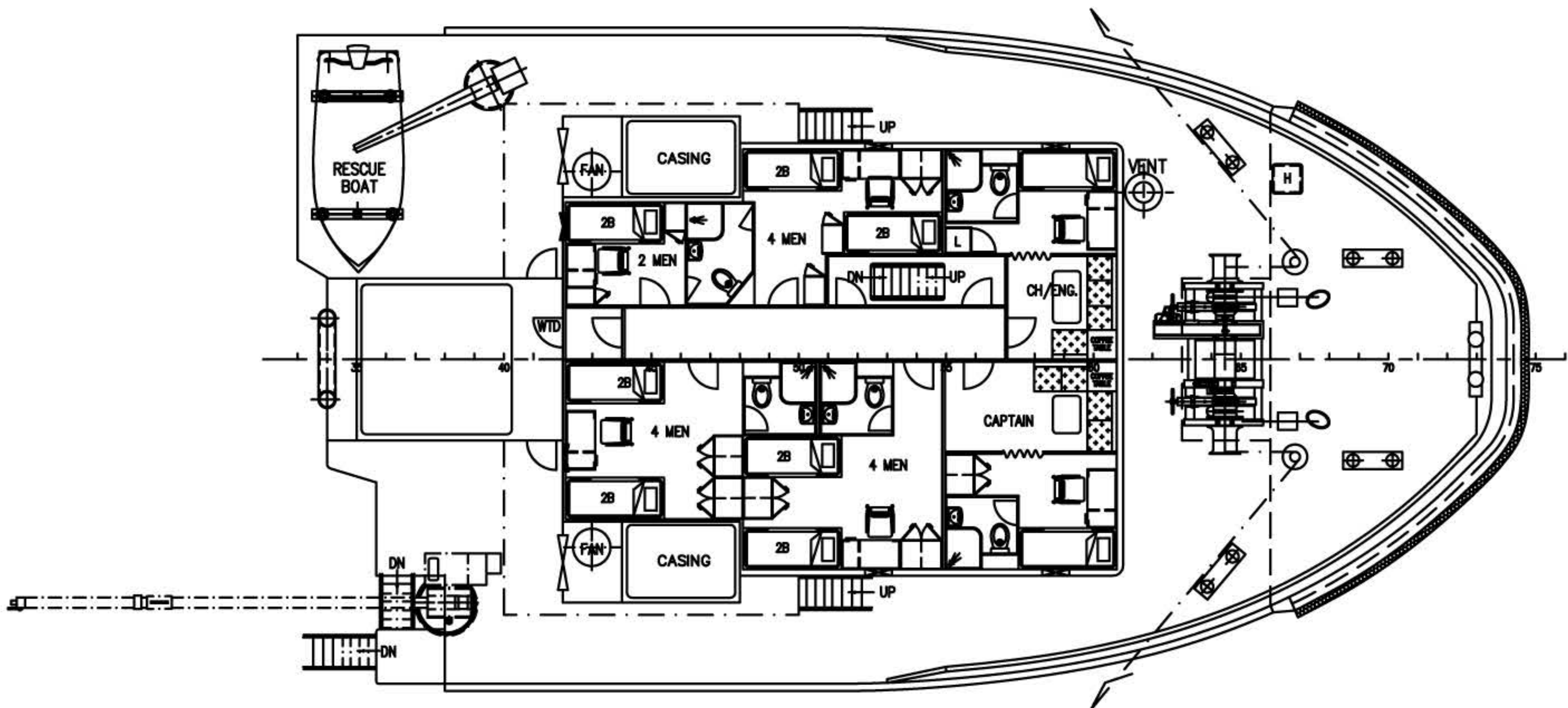


# ATAMAN

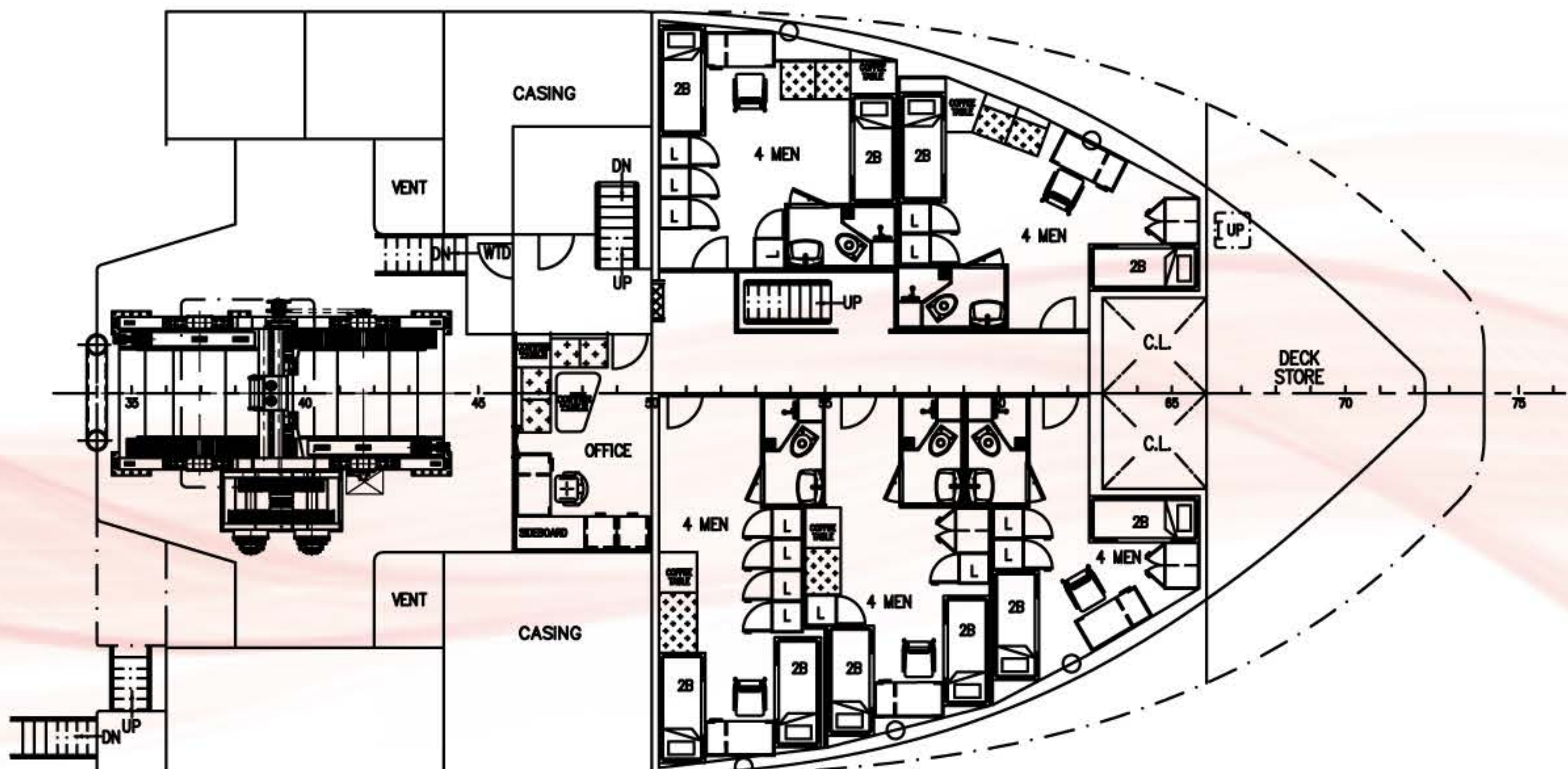
## ANCHOR HANDLING TUG SUPPLY VESSEL



WHEELHOUSE DECK PLAN



FORECASTLE DECK



RAISED DECK PLAN