

KOPARAN

BACKHOE DREDGER



GENERAL INFORMATION

Name : KOPARAN
Type : Backhoe Dredger
Flag : Turkish
Year and Place of Built : 2016 / Turkey
Class : Türk Loydu
P&I : Turk P&I
Length OA : 36,29 m
Breadth : 13,86 m
Depth : 2,95 m
GRT / NRT : 414 / 124
Accommodation : 2 personnel
Draught : 2,1 m

NAVIGATION EQUIPMENTS

AIS : i-marine AISTBCS
VHF : ICOM ICM423 VHF
Monitoring System : Foreshore Dredger
Positioning System : GNSS antenna
Gyro: Hemisphere

ENGINES & GENERATORS

Generator 1 : Alimar Jen 89 BHP
Generator 2 : Alimar Jen 89 BHP
Fuel Consumption : 0,2 ton/day
D/O Fully Loaded : 75 m³
Spud Winches : Single drum, pulling
3 nos 50 ton,
brake 100 ton, 3x250m dia 30mm
Multipurpose Winches : 4 nos 2 ton,
140m dia 18mm
Chain Winches : 1,75 ton / 60 m D32 chain
Service Crane : SWL 5,6 ton @ 4,8m

EXCAVATOR

Model : HITACHI EX 1200
Year of Build : 2014
Engine : 567 kW
Max bucket height in dumping
position : 5,11 m
Spud length : 26 m
Fuel consumption : 2,4 ton/day

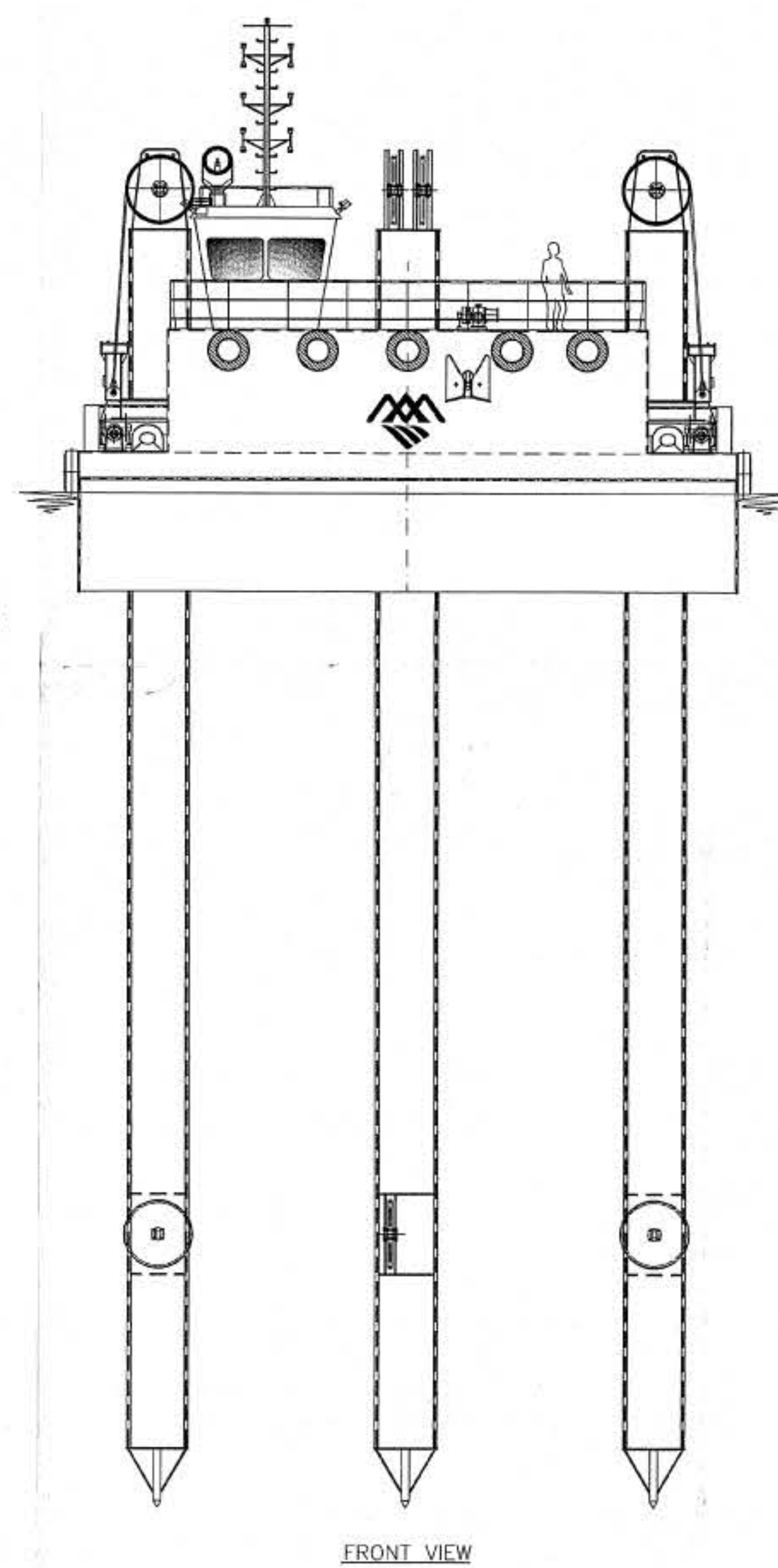
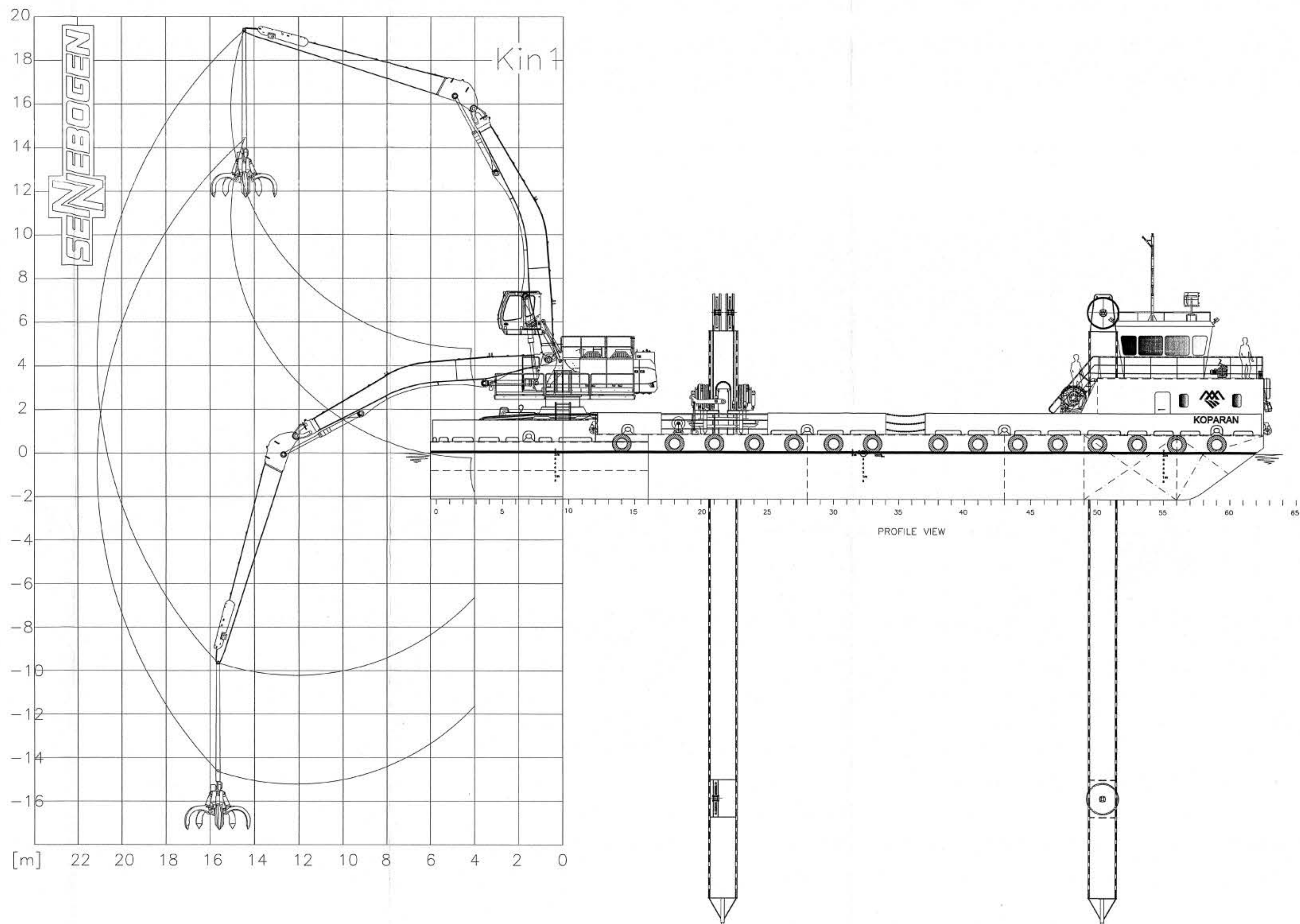
T: +90 216 446 53 09 | F: +90 216 446 13 39

www.aras-marine.com | [mail:info@aras-marine.com](mailto:info@aras-marine.com)

Sanayi Mahallesi Teknopark Bulvarı No: 1/10C Pendik / İstanbul / Türkiye



KOPARAN
BACKHOE DREDGER



KOPARAN

BACKHOE DREDGER

