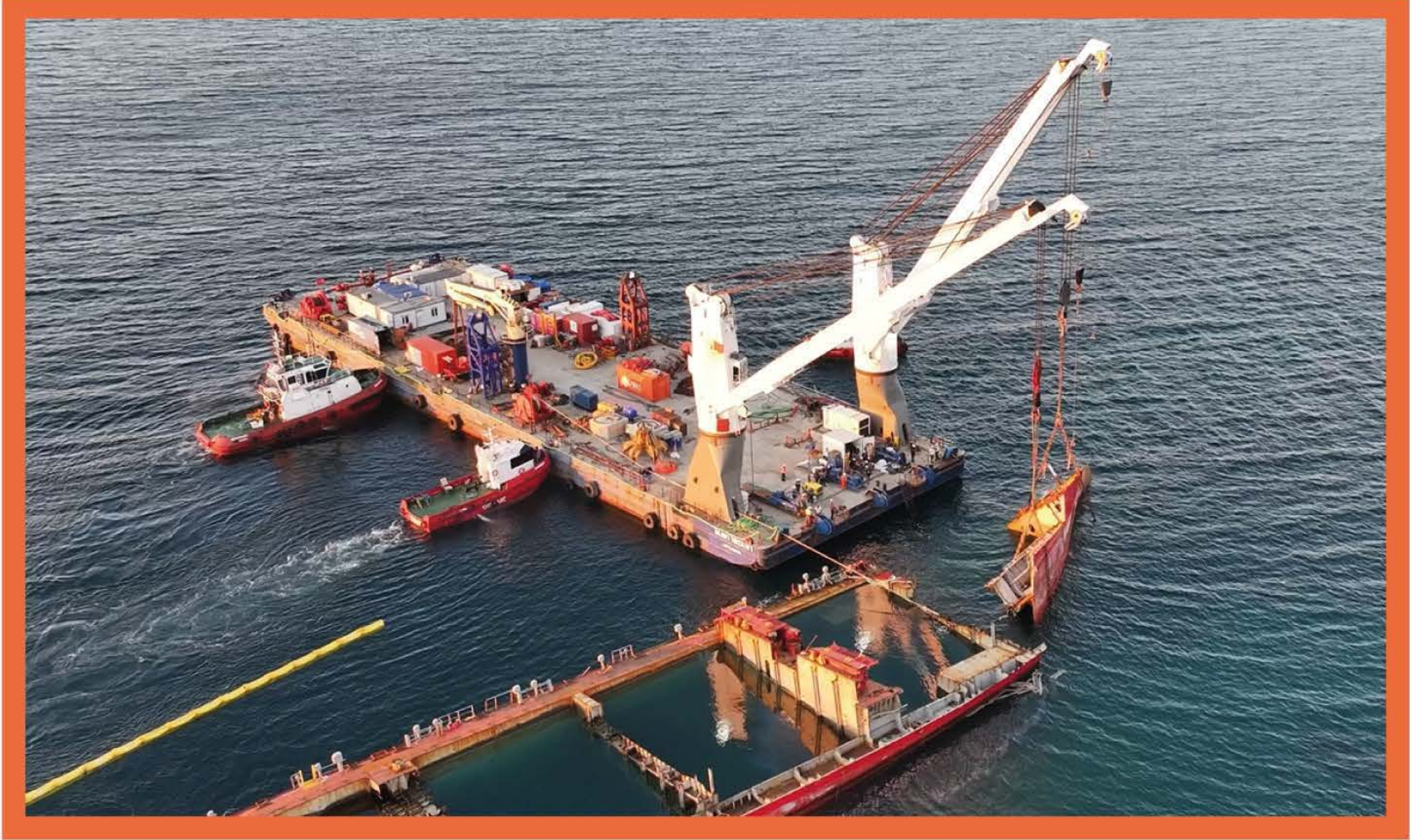


# MAVİ VATAN 1



Floating Crane Barge  
Lifting Capacity: 350 Tons x 2  
Lifting Capacity MAX: 700 Tons



## GENERAL INFORMATION

Type of vessel	: Floating Crane
Port of registry	: İstanbul
Class registration	: RINA
Year constructed	: 1994
Crane construction	: 2000
Reconstruction	: 2024
Built by	: Pioneer Offshore Enterprise Pte.
Kind of service Summer	: Ltd. World-wide
Draft Load	: 4.282
GRT	: 3,638 mT
NRT	: 1,091
DWT	: 8,580

## DECK CAPACITY

Deck area	: 2,503 m <sup>2</sup>
Deck Load Capacity	: 10 mt / m <sup>2</sup>

## DIMENSIONS

Length of vessel	: 91,5 m
Breadth	: 27,5 m
Depth (moulded)	: 5,5 m

## CRANE TECHNICAL DATA

Crane Type	: DK II
Capacity (SWL)	: 350 t
Main hoist load steps	: Main hoist outreach
SWL 350 t	: 5,25 - 14,0 m
SWL 320 t	: 4,5 - 15,0 m
SWL 250 t	: 4,5 - 19,5 m
SWL 200 t	: 4,5 - 24,0 m
SWL 140 t	: 3,8 - 34,0 m
SWL 65 t	: 3,8 - 34,0 m
Auxilliary hoist load steps	: Auxilliary hoist outreach
SWL 40 t	: 5,5 - 37,0 m
SWL 16 t	: 5,5 - 37,0 m
Sling hoist	: 4,2 - 35,3
SWL 5.0 t	: 5,25 - 14,0 m

## TANK CAPACITIES

Void tanks	: 12,641 m <sup>3</sup> Water
------------	-------------------------------

T: +90 216 446 53 09 | F: +90 216 446 13 39  
www.aras-marine.com | mail:info@aras-marine.com  
Sanayi Mahallesi Teknopark Bulvarı No: 1/10C Pendik / İstanbul / Türkiye



# MAVI VATAN 1



Floating Crane Barge  
Lifting Capacity: 350 Tons x 2  
Lifting Capacity MAX: 700 Tons

**HOISTING HEIGHT**      **Approx. 36 m**

## LUFFING

SWL 350 t            : T = 100 sec  
SWL 320 t            : T = 110 sec  
SWL 250 t            : T = 160 sec  
SWL 200 t            : T = 120 sec  
SWL 140 t            : T = 260 sec  
SWL 65 t             : T = 150 sec

## HOISTING SPEED

SWL 350 t            : 0 - 3,0 m/min  
SWL 320 t            : 0 - 3,0 m/min  
SWL 250 t            : 0 - 3,5 m/min  
SWL 200 t            : 0 - 4,2 m/min  
SWL 140 t            : 0 - 5,8 m/min  
SWL 65 t             : 0 - 11,0 m/min

Hoisting speed of auxilliary hoist

40 t                    : 0 - 18 m/min  
16 t                    : 0 - 32 m/min

Hoisting speed during

automatic operation    : 0 - 3,0 m/min  
Slewing speed > 100t    : 0 - 0,3 rpm  
Slewing speed < 65t     : 0 - 0,6 rpm

Feature                : Value  
Slewing Range        : >360°  
Specification         : 350 t load and 14 m  
                              outreach at +/- 3°  
                              heeling and simultaneous  
                              trim of +/- 2°

## POWER

Nominal voltage (U)    : 440 V / 60 Hz  
Motor speed (n)        : 1,775 r/min  
Installed capacity      : 2 x 132 kW  
Maximum power input,   : 2 x 160 kW  
temporary  
Reverse power          : 2 x 100  
Auxilliary              : 230 V / 50 Hz

## MAIN PUMP MOTOR

Type                    : 280 M4  
Manufacturer            : Schorch  
Protection class        : 132 kW  
Design, standstill heater : Insulation class IP23  
with three posistors    : F; 45° GL

Miscellaneous         : Star - delta starter

## 40 TONNES SWL

MAX RADIUS 29,500 AT 15° JIB INCLINATION

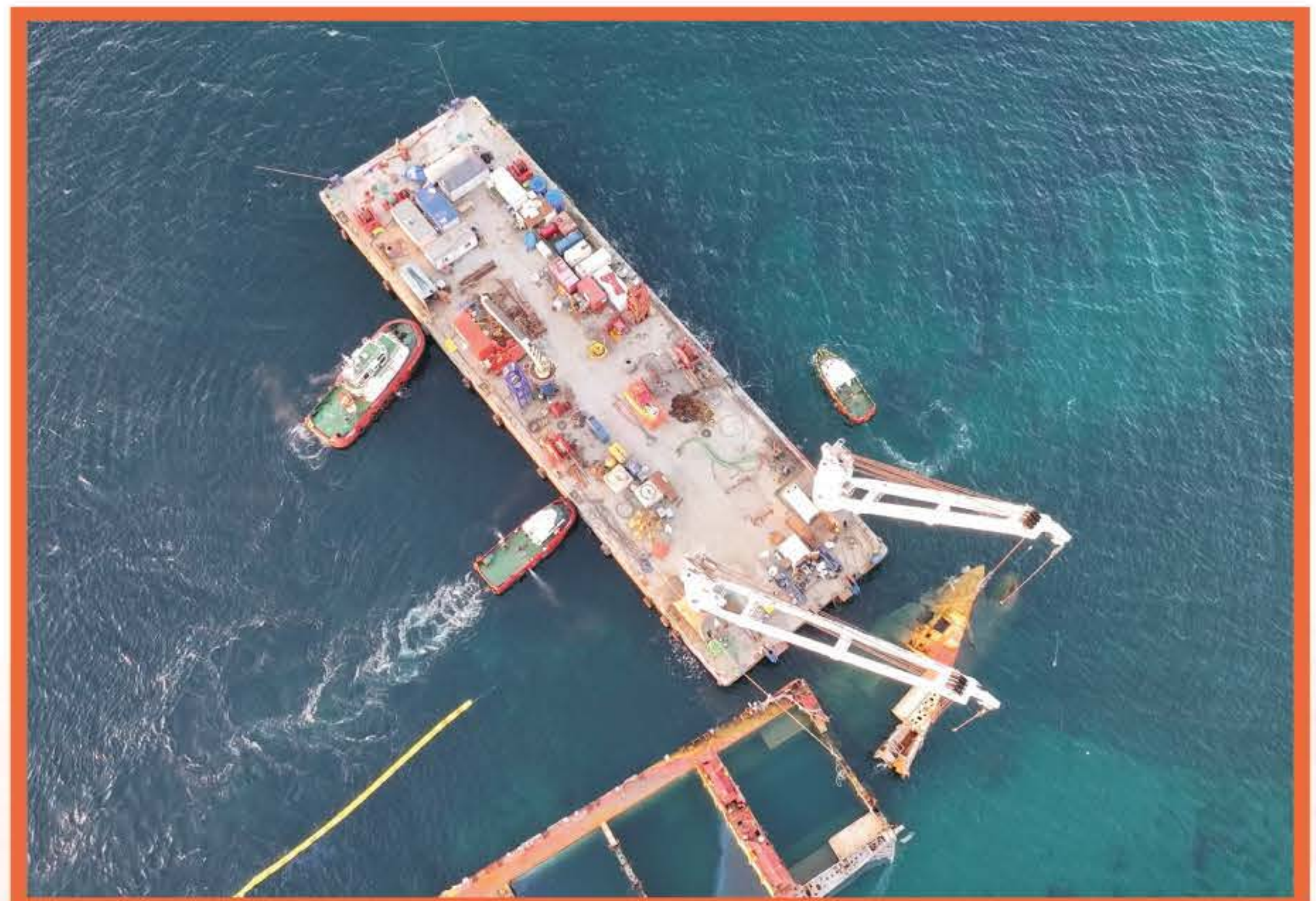
## SPEED

HOSTING/LOWING WITH 45T: 0 - 20 m/min  
HOSTING/LOWING WITH 40T: 0 - 21,5 m/min  
HOSTING/LOWING WITH 32T: 0 - 25,5 m/min  
HOSTING/LOWING WITH 25T: 0 - 30,0 m/min  
HOSTING/LOWING WITH EMPTY HOOK : 0 - 33,0 M/MIN

HUMBER OF FALL OPERATION : 4 FALL  
SLEWING SPEED AT 5° HELL / 2° TRIM AND FULL  
SLEWING RANGE : 360° UNLIMITED LOAD: 0 - 0,75 RPM  
LUFFING TIME APPROX. 80 sec. (with full load from  
max. to 2,8m min. working radius)  
MAIN POWER SUPPLY: 440V 60Hz, 3pH

## MOORING SYSTEM

4 Mooring system  
Wire rope 42 mm 600 m Long  
4x drum wire winches 30t - 6 m/min  
(could be upgraded to 6 or 8 point mooring system)

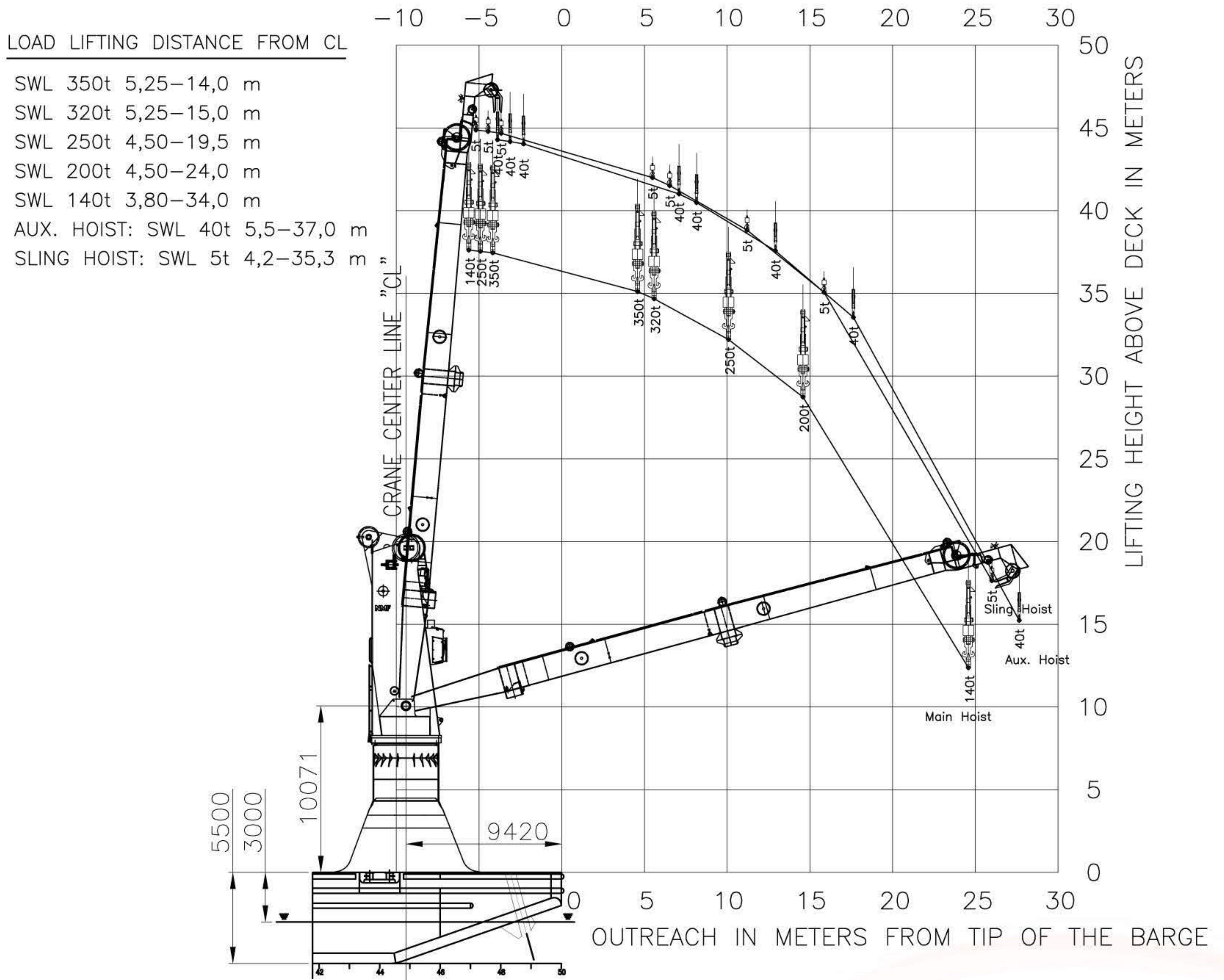


# MAVI VATAN 1



Floating Crane Barge  
 Lifting Capacity: 350 Tons x 2  
 Lifting Capacity MAX: 700 Tons

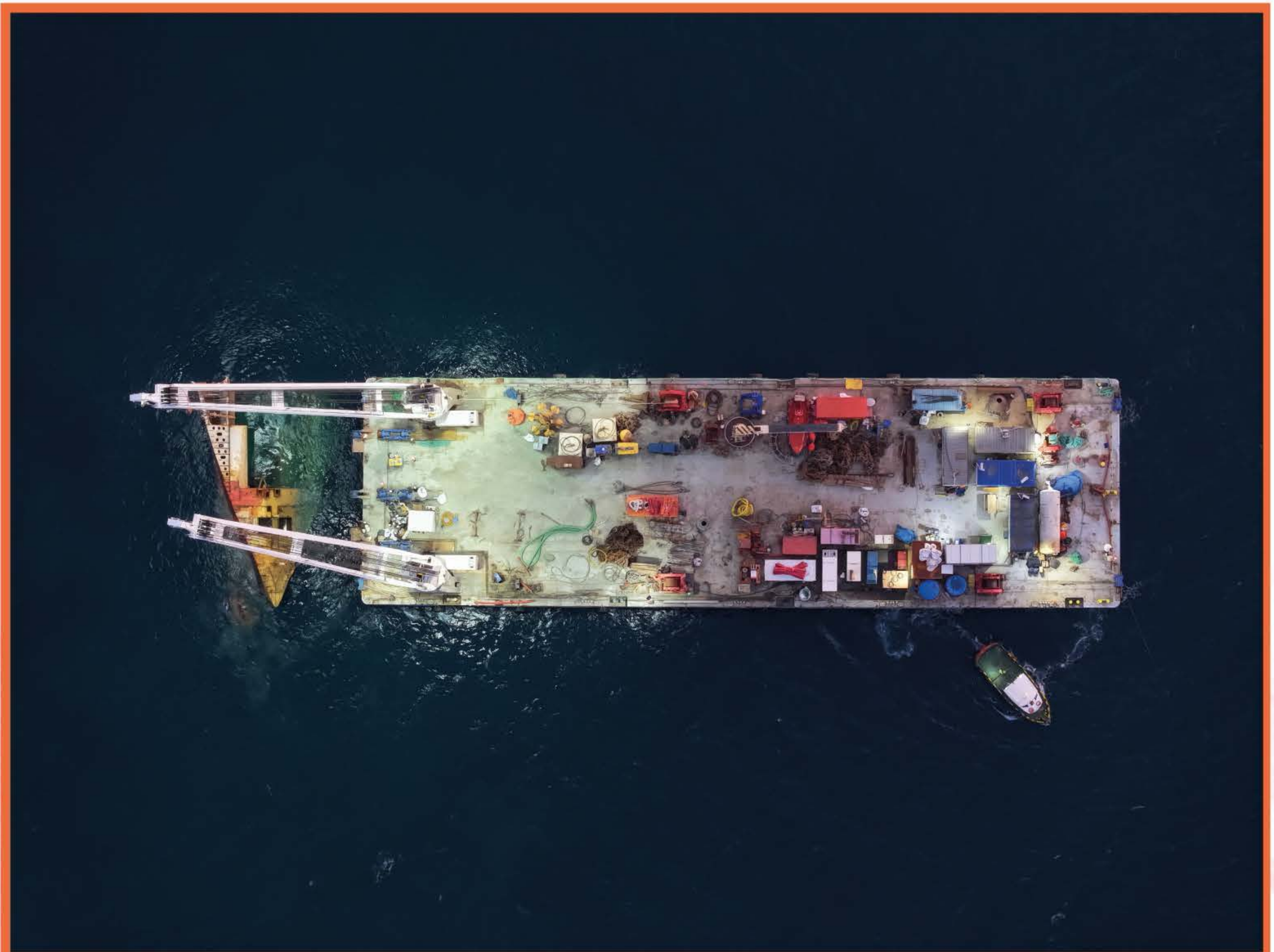
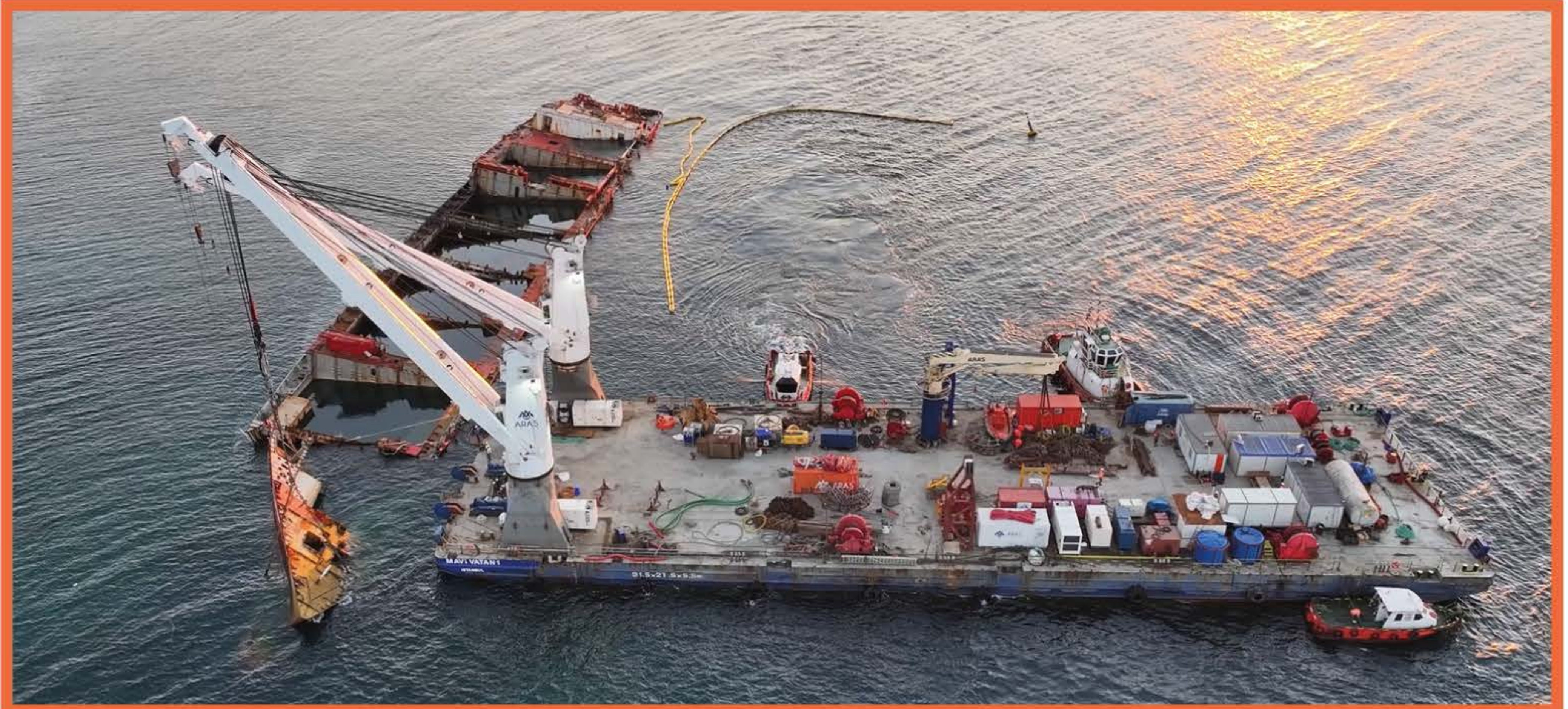
NMF DKII 350t BOARD CRANE LOAD CHART



# MAVI VATAN 1



Floating Crane Barge  
Lifting Capacity: 350 Tons x 2  
Lifting Capacity MAX: 700 Tons



# MAVI VATAN 1



Floating Crane Barge  
 Lifting Capacity: 350 Tons x 2  
 Lifting Capacity MAX: 700 Tons

## MAIN DIMENSIONS

LOA	:91,50 m
BREADTH	:27,43 m
DEPTH	:5,50 m
WATER DRAFT	:4,275 m
DWT	:8580 Ton
GROSS TONE	:3638 GRT
NET TONE	:1091 NRT

